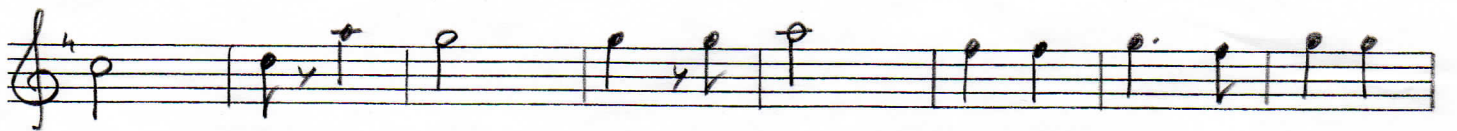
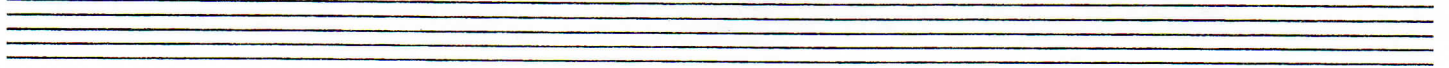
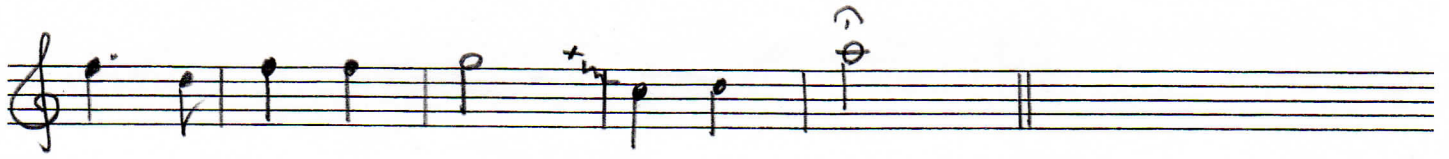
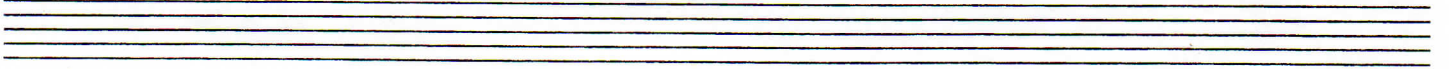


シボッけ

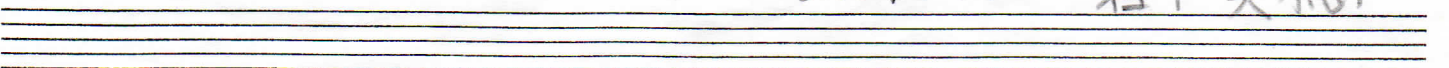
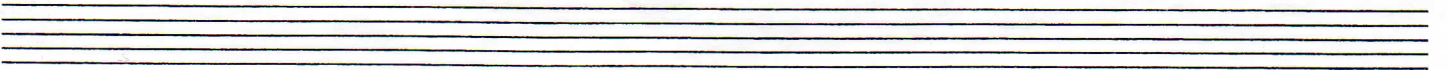




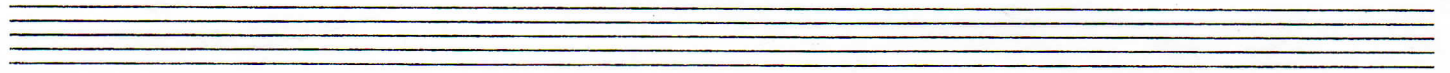
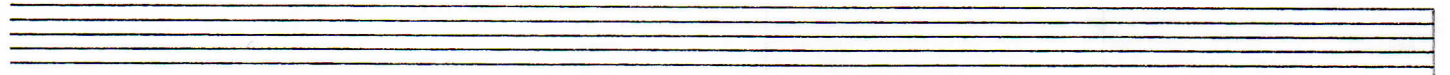
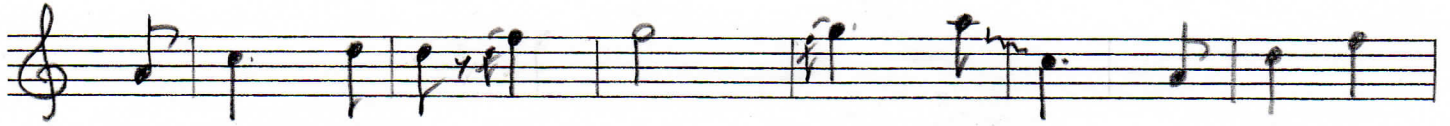
たちぶえ



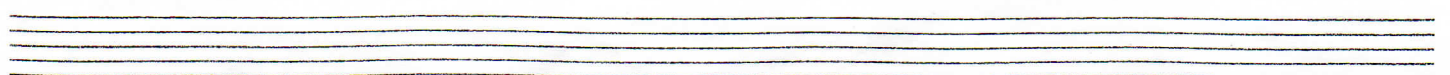
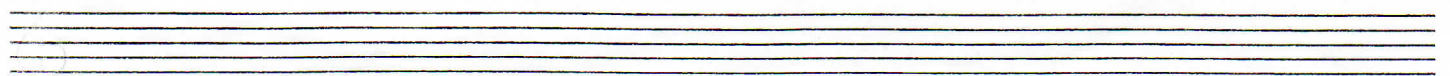
道中下り



すりだし



おかしきん



箏掛り

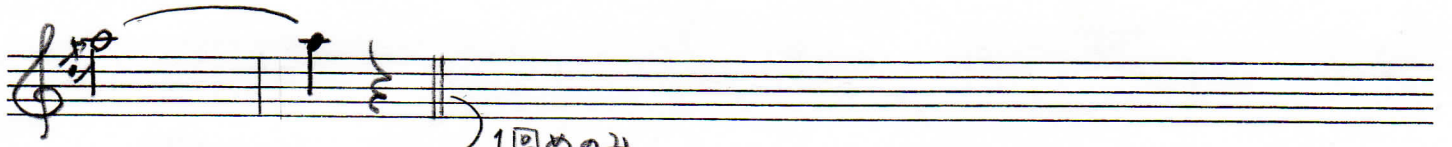
Handwritten musical notation for "箏掛り" (Koto-kari). The notation is on three staves in treble clef. It features various note values, rests, and triplets. A specific triplet in the second staff is annotated with "2回め 3." and an upward-pointing arrow.

弓くぐり

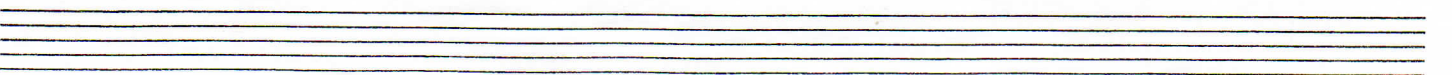
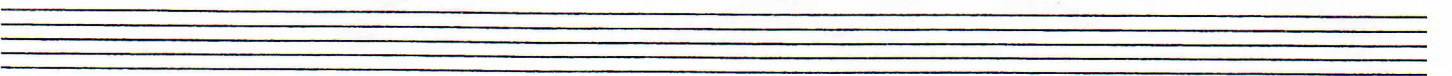
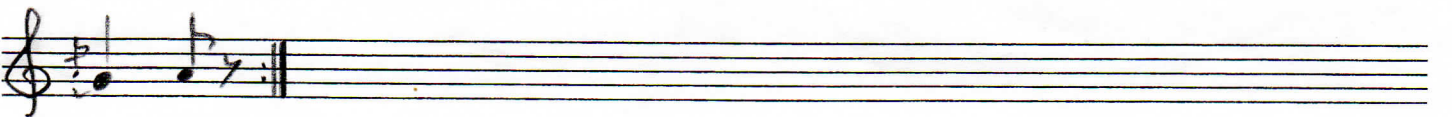
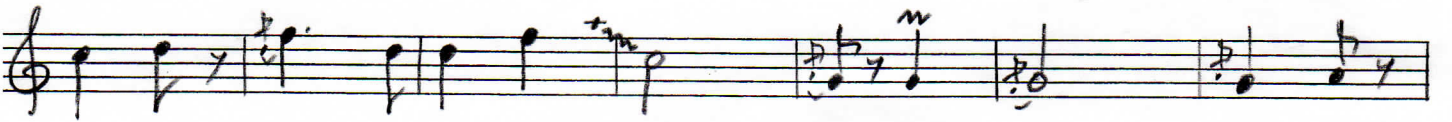
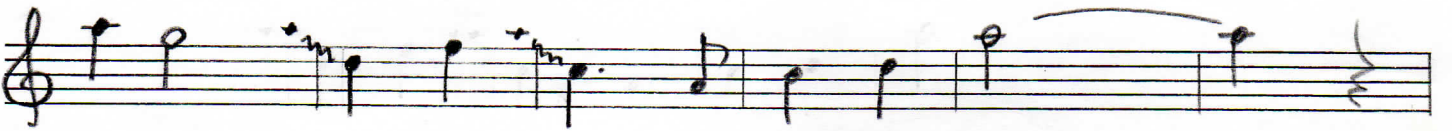
1回めのときのみ

Handwritten musical notation for "弓くぐり" (Yumi-kuguri). The notation is on four staves in treble clef. The first staff begins with a dynamic marking "p (mm)" and includes notes with asterisks. The piece concludes with a double bar line on the fourth staff.

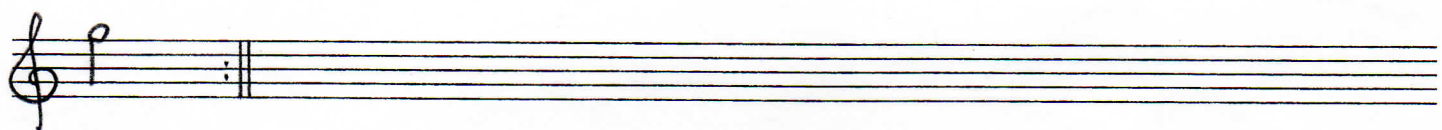
鐘巻き



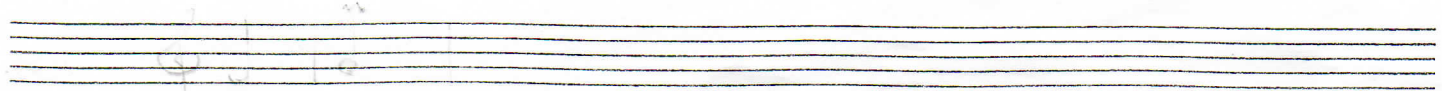
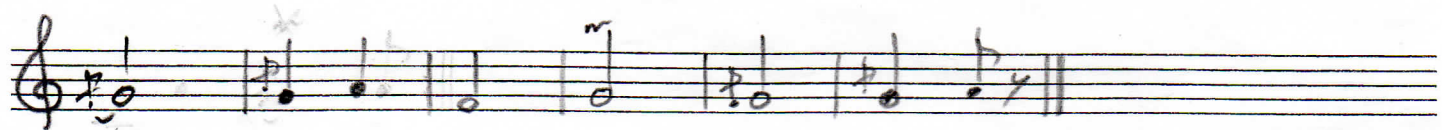
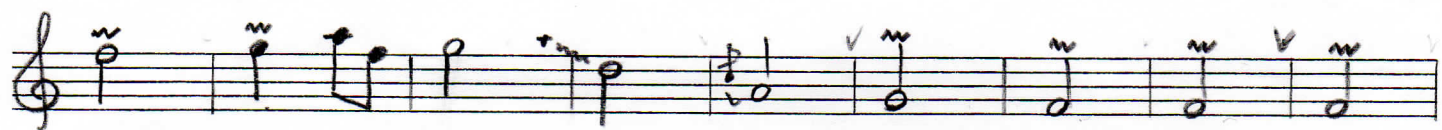
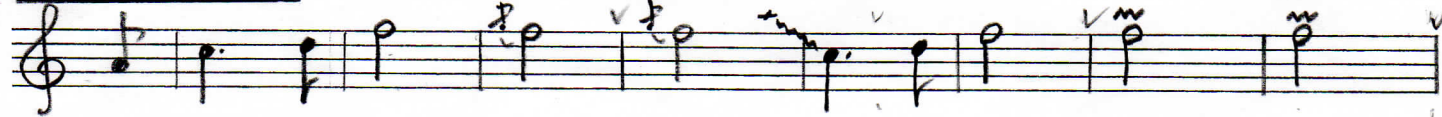
1回めのみ



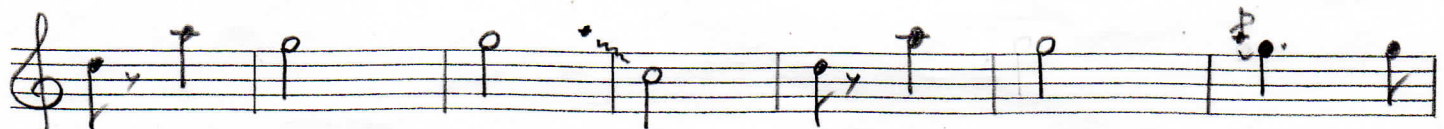
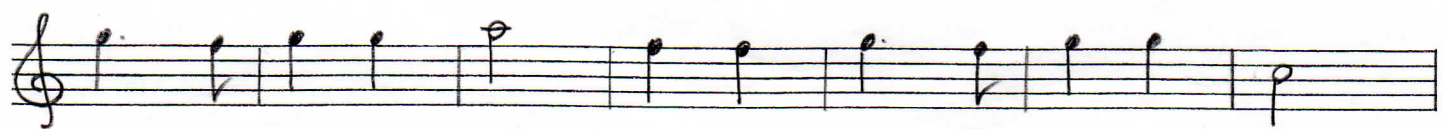
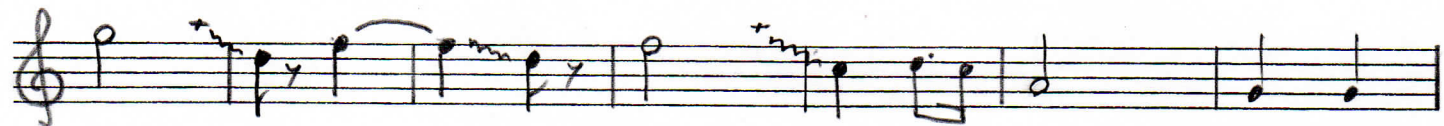
花

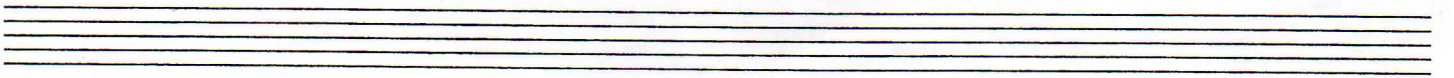
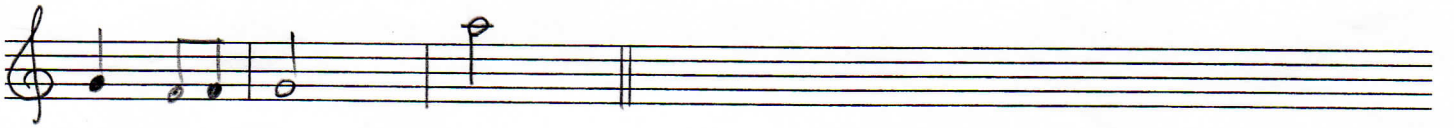
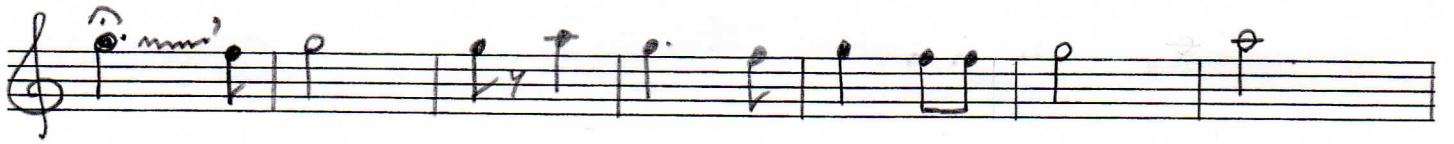


面化追い

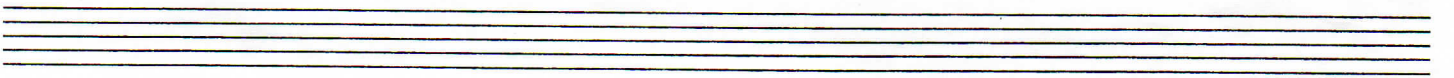


55L

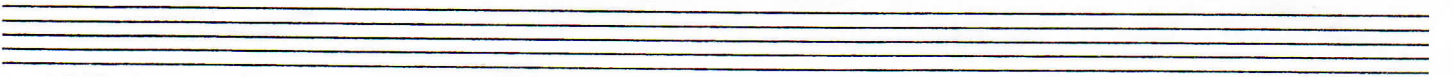




うた



かりも はやしも せみのこえ



なりをしずめて うたのふしをきけ

